

# SuperBond

STONE COATED METAL ROOFING



# TABLE OF CONTENTS

TABLE OF CONTENTS

SUPERBOND ROMANA PROFILE

SUPERBOND CLASSIC PROFILE

SUPERBOND SHAKE PROFILE

**SuperBond**  
STONE COATED METAL ROOFING



# SuperBond

STONE COATED METAL ROOFING



## Superbond Stone Coated

The Superbond Stone Coated Metal Roof Tiles stand out for their eco-friendly composition and remarkable corrosion resistance, particularly in coastal regions. These tiles come in three distinct profiles: the Shake, Classic, and Romana. While each profile offers unique style variations, their underlying composition remains consistent.

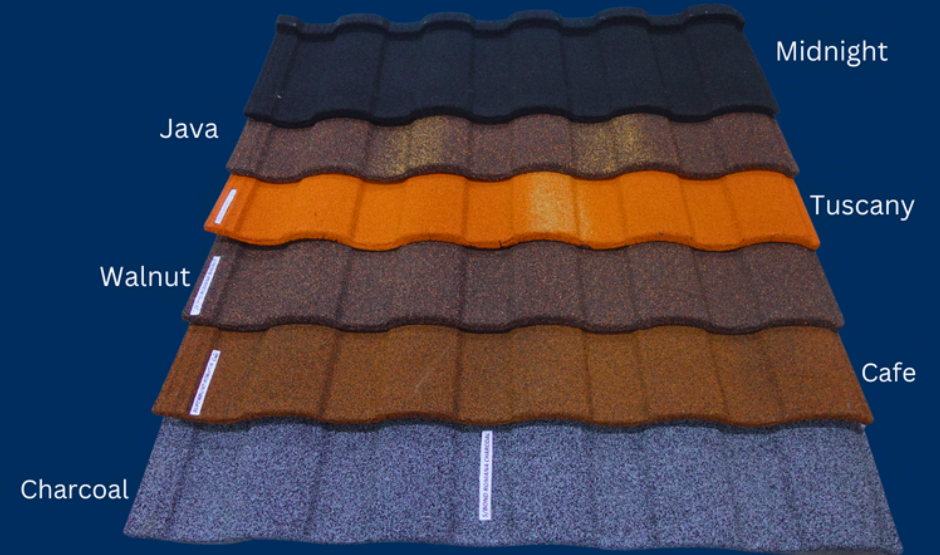


Roof Kit

# INTRODUCTION

## Superbond

## Romana Profile



SuperBond  
STONE COATED METAL ROOFING



Our stoned coated tiles are comprised of these materials:

Clear Acrylic Overglaze

Basecoat

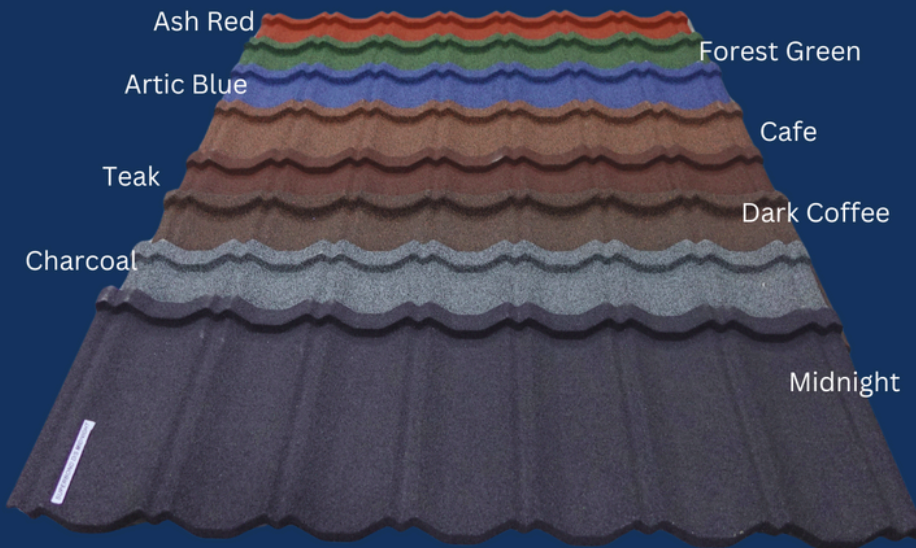
Acrylic Resin Protective Coating

Alu-Zinc

Steel Base

## Superbond

## Classic Profile



**SuperBond**  
STONE COATED METAL ROOFING



Our stone coated tiles are comprised of these materials:

Clear Acrylic Overglaze  
Basecoat  
Acrylic Resin Protective Coating  
Alu-Zinc  
Steel Base

## Superbond

## Shake Profile

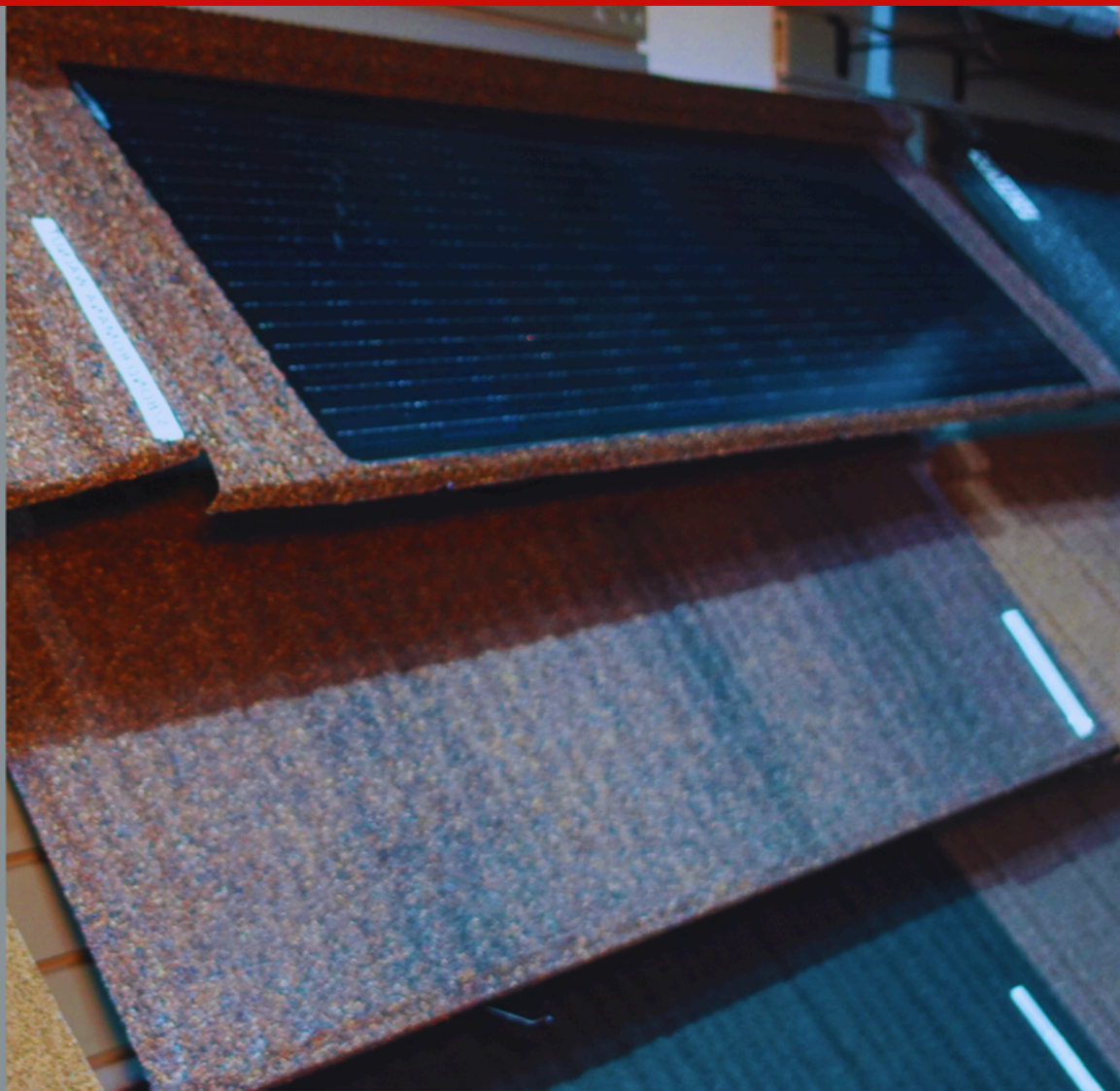


**SuperBond**  
STONE COATED METAL ROOFING



Our stone coated tiles are composed of these materials:

Clear Acrylic Overglaze  
Basecoat  
Acrylic Resin Protective Coating  
Alu-Zinc  
Steel Base



**SuperBond**  
STONE COATED METAL ROOFING

# SOLAR

## The Shake Profile with Solar Panel

The Superbond Shake Profile stands out as the sole stone-coated metal tile currently equipped with an embedded solar panel. Available in a range of colors, including: Teak, Carbon Brown, Midnight, and Walnut, this innovative roofing solution combines aesthetics with sustainable energy generation.

### Physical Parameter

Model	JSxxDG-9 e 1/2 (xx=Power Of Components)		
Tile Size	1340*420mm		
Weight	6kg		
Glass	Tempered/ 3.2mm		
Cell Size	182*91mm (3*6)		
Junction Box	≥IP67		
Cable	500mm / 4mm <sup>2</sup>		
Connector	MC4		
Lifespan	>30 Years		

### Electrical Parameter At STC

Color	Black	Gray	Red
Cell Type	Mono. Silicone		
Max Power	65W	52W	55W
Module Efficiency	17.9%	14.3%	15.1%
Voltage At Pmax	10.3V	9.36V	9.80V
Current At Pmax	6.31A	5.56A	5.61A
O.C. Voltage	12.5V	11.8V	12.2V
S.C. Current	6.66A	6.01A	6.06A

STC: 1000W/m<sup>2</sup> irradiance, 25 °C cell temperature, AM1. 5g

### Performance & Ratings

Pressure Load	2400Pa
Fire Resistance	ClassA
Hail Resistance	Φ25mm/23m/s
Working Temp.	-40°C~+85°C
Working Humidity	0-80%

### Operating Conditions

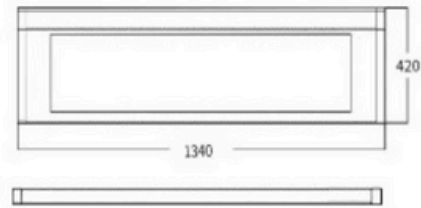
Max System Voltage	1500VDC
Max Series Fuse Rating	20A
Operating Temp. Range	-40°C ~ +85°C
Front Max Pressure Load	5400Pa
Back Max Pressure Load	2400Pa
Hail Test Data	25mm / 23m/s

### Temperature

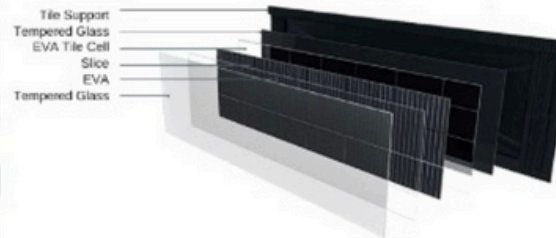
Nominal Working Temp.	NOCT	°C	45 ± 2
Temp. Coefficient At Pmax	γ	%/°C	-0.36
Temp. Coefficient At Voc	βVoc	%/°C	-0.30
Temp. Coefficient At Isc	αisc	%/°C	0.05

### Product Size

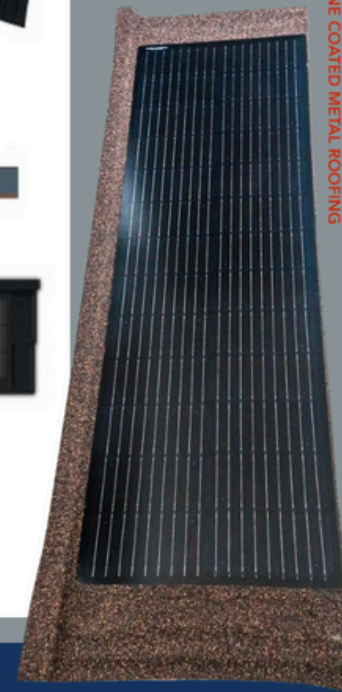
UNIT : mm



### Dimensions



### Product Display



**SuperBond**  
STONE COATED METAL ROOFING

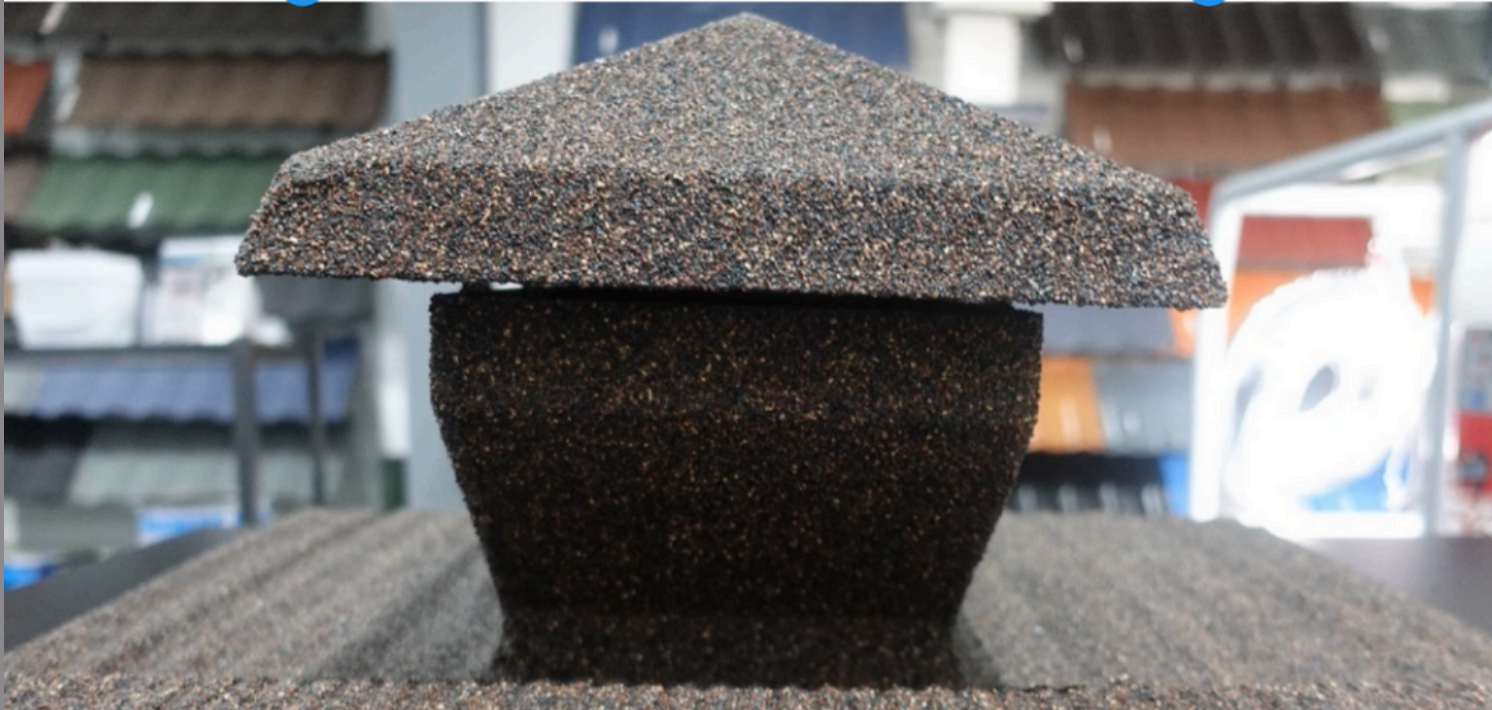
# SOLAR

## Specifications of the Shake Solar Panel

# SuperBond

STONE COATED METAL ROOFING

## Roof Vent



Roof vents offer an economical solution for maintaining a cool home, particularly during the scorching summers. Their purpose is to enhance air circulation, ensuring a steady flow of refreshing cool air indoors. These vents are exclusively available in the Shake profile.

# SUPERBOND

---

DISTRIBUTED BY



1 (876) 578-5781 OR 1 (876) 318-1504